



---

Futurotextiles 5

# Textidream

Expo 2020 Dubai - France Pavilion

---

01 OCTOBER 2021 > 31 MARCH 2022

**PRESS KIT**





# Contents

---

<b>lille3000, the voyages goes on</b>	<i>04</i>
<b>Textidream - Futurotextiles 5</b>	<i>05</i>
<b>Expo 2020 Dubai</b>	<i>06</i>
<b>Mobility</b>	<i>08</i>
<b>Bioman</b>	<i>10</i>
<b>Aroma</b>	<i>12</i>
<b>Éole</b>	<i>14</i>
<b>Aquatic</b>	<i>16</i>
<b>Lux</b>	<i>18</i>
<b>Cosmos</b>	<i>20</i>
<b>Team &amp; contacts</b>	<i>22</i>
<b>Textidream partners</b>	<i>23</i>

# lille3000, the voyage goes on

In becoming the European Capital of Culture in 2004 (**Lille 2004**), Lille and its region profoundly changed the way people looked at the city and an entire territory. It made for an exceptional year, from which strong images endure, such as the Opening Celebration drawing a crowd of 750,000, the Parallel Worlds or the countless Metamorphoses, but it has also had a durable legacy in the form of the Maisons Folie.

Buoyed by this wonderful creative energy and extraordinary public enthusiasm, we wished to keep the adventure going through **lille3000**, to continue exploring the cultures and complexities of our world while looking to contemporary art, innovation and the future.

From *Lille Bombaysers* in 2006 to *Eldorado* in 2019, lille3000's major thematic editions have attracted thousands of visitors and presented hundreds of works and artists. lille3000 has also programmed a series of major contemporary art exhibitions in an exceptional Lille venue: **the Tripostal**.

A dynamic approach of inviting important collections was inaugurated in 2007 with the Pinault Collection (*Passage of Time*), followed in 2009 by the Saatchi Gallery (*The Silk Road*), in 2011 by the Centre National des Arts Plastiques (*Collector*), in 2013 by the Emmanuel Perrotin gallery to celebrate its 25th anniversary (*Happy Birthday, Galerie Perrotin 25 years*), in 2014 with an exhibition dedicated to eighteen private Flemish collectors (*Secret Passions*) and most recently on the occasion of the 40th anniversary of the Centre Pompidou (*Performance*).

These exhibitions bring together the biggest names on the international scene alongside emerging artists, while also telling the stories of the invited collectors and confronting us with the questions and indignation they feel in relation to humankind and the state of the world.

Another recurring theme of lille3000: multiple visions of the future and the avant-garde. At the heart of this theme we find the *FUTUROTILES* exhibition, which, since 2006, has travelled the world in various forms that reflect the rich diversity of new textiles. In 2015, a brand new version called *Textifood* was devised, focusing on micro-organisms derived from the agri-food industry used to develop textile materials. After premiering at Milan Expo it is currently touring internationally. Today, a fifth edition entitled *Textidream / Futurotextiles 5* is being prepared for Expo Dubai 2020 where it will feature in the French Pavilion in Autumn 2021.

While anticipating 2022 and the preparation of its sixth edition entitled *UTOPIA*, lille3000 is pursuing and building on this momentum, drawing more and more people together in 2021 for new events at the Tripostal including the *Colors, etc.* project, in partnership with Design Museum Gent, and the *Young Colors* exhibition, but also at the Gare Saint Sauveur where every weekend convivial experiences await the whole family.



# Textidream - Futurotextiles 5

lille3000 has imagined a new edition of the Futurotextiles exhibition for the 35<sup>th</sup> World Expo in Dubai, which will open its doors on 1 October 2021.

The **Textidream** exhibition, curated by Caroline David, will feature an original scenography in which micro-architecture capsules showcase the latest textile innovations inspired by French excellence, in particular from the Hauts-de-France Region and the Lille Eurodistrict.

The microcapsules will evoke the aesthetics of automated figures and snow globes, each one functioning as a poetic and futuristic animated theatre in its own right.

Luminous lace, fibre optic hangings and trimmings, perfumed and microencapsulated organza, a compressed-air vehicle with a flax body, a motorised exoskeleton and customised prostheses made of basalt fibre composite and bio-sourced resin, a feather dress fluttering to the rhythm of a wind turbine... will all be created by visionary companies and artists dedicated to research, development and innovation.

**Textidream** will be presented on the esplanade of the France Pavilion, a shaded, 2,000 m<sup>2</sup> space planted with trees, designed as a place for visitors to relax but also where their arrival will be transformed into a rich field of experience. Waiting times will become moments of sharing and emotions, a concert of sensations inviting visitors to dream and discover.

**Textidream** will be consistent with the programming of the France Pavilion, which will showcase the response of French expertise to the major challenges of sustainable development and the UN goals.



Bioman

## WITH

ATELIER 20.12  
Atelier Janaína Milheiro  
Brochier Technologies  
La Bonne Accroche  
CELC (Confédération  
Européenne du Lin et du  
Chanvre)  
CNES (Centre national  
d'études spatiales)  
Cité de l'espace de  
Toulouse  
COP Chimie  
Clubtex  
Declercq Passementiers  
Domital orthopédie  
Dupont orthopédie  
E&T Symbiose  
Franck Bricout  
ISOMATEX  
IFF (International Flavors  
& Fragrances)  
IYE Movie Gang  
Japet  
Jérémy Gobé

MDI Production  
MHK (My Human Kit)  
Mobilier National  
Musée d'Histoire  
Naturelle de Lille  
Musée de la Piscine de  
Roubaix  
Nausicaá  
Nathalie Danino-Gruz  
On aura tout vu - Atelier  
de haute couture  
Robert Blondel  
Cosmétiques  
Peignage Dumortier  
Safilin  
Solstiss  
Team Össur  
U-Exist  
Van Robaeys Frères  
Vergnet  
Veral  
Yiqing Yin (Studio YY)

## SCENOGRAPHY BY GEORGI STANISHEV

The exhibition is designed as a series of science-fiction experiences, playing with illusions while using codes borrowed from both poetic and high-tech universes. Each of the seven capsules on display becomes a circular table variously invoking an astrolabe, a laboratory for experiments, a machine that transforms or a metaphysical distillery.

# Expo 2020 Dubai - France Pavilion

## PROMOTING FRANCE THROUGH ITS INNOVATIONS

The ambition of this exhibition is to promote French talent in all its forms and to create an exceptional moment for the Nation to express itself on the international stage. The France Pavilion aims to be the project of all French people.

In keeping with the Olympic Games or the European Heritage Days, the World Expo aspires to becoming a collective event federating all French people in support of their pavilion. In this unrivalled showcase for the know-how and innovations of our companies, France will demonstrate how the digital revolution has the potential to transform cities and territories, promoting a sustainable vision for new generations.

The France Pavilion will be located in the **mobility zone** at the entrance to the park. It will express France's vision on this international stage, but also serve as a platform reinforcing the French presence.

The France Pavilion has been designed to fully satisfy the UN's sustainable development goals.

## LIGHT, LIGHTS

Light is the central theme of the France Pavilion. It will be expressed in different forms throughout the visit to offer a unique experience: light as a philosophy, as a source of warmth and creativity, and as a vector of connection.

## THE THREE VALUES OF THE FRENCH PAVILION

**Daring:** Daring implies a willingness to act. In an unstable world, France chooses to take on the challenges of our times.

**Art de Vivre:** Art de vivre denotes the "French way of life". Among other things, it brings to mind gastronomy, science, fashion, culture, diversity and refinement, embodying France's image in the world.

**Collective:** The collective is a wonderful challenge, a means of envisioning the future. This value draws its strength from the diversity of France's population, territories and cultures.







© DR

# Mobility

An imaginary landscape in the form of a spiral into infinity presents two bio-sourced flax composite prototypes, made by the company **MDI Prod** (FR) in partnership with **Van Robaeys** (FR): *Green'Air* and *AirLight*.

The *Green'Air* golf cart or tourist resort buggy, a prototype currently being commercialised, features innovations in both its compressed air engine and its flax-composite body. The *Green'Air* fills up with air in a single minute, has a range of 40 to 60 km and can accommodate two to four people plus equipment.

The *AirLight* is a standalone (off-grid) lighting system, composed of multiple LEDs as well as a solar panel and a vertical wind turbine that drive a compressor. The energy is not stored in batteries, but in the form of compressed air in the shaft of the lamp post, which is made of a flax composite. The built-in engine uses this compressed air to generate the electricity that powers the LEDs and provides lighting.



FLAX has had many different statuses since it became the first plant fibre to be used as a textile clothing mankind 38,000 years ago. Always a vector for innovation, it is now attracting the interest of industrialists and engineers looking for solutions that can be adapted to a responsible bioeconomy. Thanks to its unique mechanical properties, particularly in composites, flax is being used in technical textiles designed for new uses. Its low density, lightness, higher specific rigidity than glass fibres and vibration absorption make it appealing to sectors such as the automotive industry for example. Flax is now moving towards a desirable future, that of high-performance biosourced composites (low density, specific rigidity, vibration absorption, thermal and acoustic insulation and a reduced environmental footprint).

## UN SUSTAINABLE DEVELOPMENT GOALS:

- 7** Ensure access to affordable, reliable, sustainable and modern energy for all
- 13** Take urgent action to combat climate change and its impacts

### PARTNERS



Carros (06)



Killem (59)

### SAMPLES

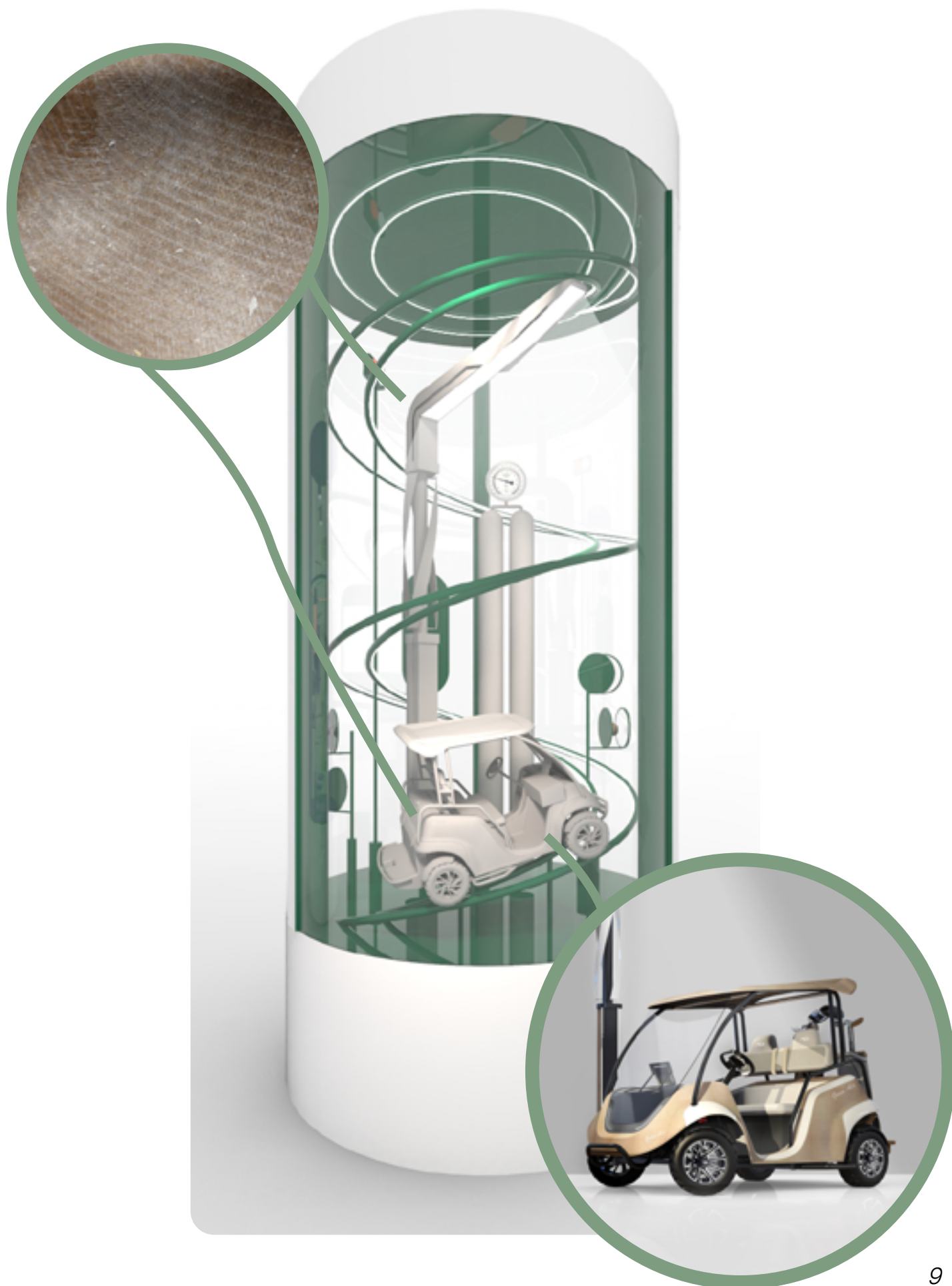


Tourcoing (59)



Sailly-sur-la-Lys (62)





# Bioman

Two mannequins in this capsule illustrate how technical textiles are introducing innovations in the health sector.

The unique innovation here is to take an artistic approach, customising prostheses made from a new textile composite incorporating basalt fibres (volcanic rock) and a biosourced resin. This is the bold, ground-breaking strategy that the militant and unique orthopaedic design studio **U-Exist** (FR) has been following for several years now. U-Exist's hallmark? Enhancing orthopaedic devices with contemporary and artistic designs, coupled with expertise in applying printed and laminated lycra on innovative materials. For the Expo, U-Exist is taking inspiration from a painting featured in the collections of **La Piscine - Musée d'art et d'industrie André-Diligent** in Roubaix (FR): *Fleurs d'Automne* by Edouard Toudouze (1890).

French company **Japet** (FR) has made great strides in relieving, correcting and reducing back pain with its robotic brace. In collaboration with occupational physicians, back surgeons and ergonomists, the company has developed the *Japet.W* exoskeleton, capable of monitoring the user's movements in real time and adapting to them. It also preserves the muscular activity of the lumbar area. Major French companies in the construction, logistics and personal care sectors have adopted this technology for their teams.

## UN SUSTAINABLE DEVELOPMENT GOALS:

**3** Ensure healthy lives and promote well-being for all at all ages



**BASALT** is the most common volcanic rock on Earth and a fundamental component of the oceanic crust. Basalt fibre is made by pultruding volcanic rock, melted in blast furnaces. As opposed to extrusion, pultrusion pulls out the fibre. This process creates a continuous, polymer-reinforced fibre. Basalt fibres have many properties: they are natural and therefore have a very small ecological footprint; they have a high resistance to fire and high temperatures as well as excellent mechanical strength.

### PARTNERS



Roubaix (59)



Loos (59)



Dunkerque (62)



Saint-Nazaire  
-en-Royans (26)



Rennes (35)



Cenon (33)

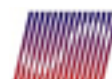


Islande



Roubaix (59)

### SAMPLES



**ISOMATEX S.A.**  
Advanced Fiber Manufacturer

Belgique





# Aroma

In the manner of an experiment, this capsule is the result of a sensory and poetic alchemy between the organic language of plant biology, the scientific and futuristic world of the research laboratory, particularly in relation to textile microencapsulation, and the olfactory quality of flowers.

The *Minima Naturalia* dress created by **Yiqing Yin** (FR) is structured as a sculptural embroidery of crystal pearls, wound in tubular spirals of liquid organza sewn by the designer.

She has designed this unique and sublime dress as a sculpture of water and light, in which the materials symbolise the distillation of the microencapsulated fragrance on the fabric, which diffuses on contact with or when brushing against the skin. Microencapsulation exists in different industrial sectors such as pharmaceuticals, medicine and biotechnics.

The designer's "crystal drop" exoskeleton conjures up images of perfume bubbles scented with essences of narcissus from the Lozère and Indian jasmine, a special fragrance created by **Dominique Ropion** for the France Pavilion at Expo 2020 Dubai.

## UN SUSTAINABLE DEVELOPMENT GOALS:

**3 Ensure healthy lives and promote well-being for all at all ages**



**MICROENCAPSULATION** involves a set of techniques used to create individualised particles enclosing an active ingredient and whose size ranges from 100 to 1000 microns. Here, organza is microencapsulated using the padding technique (impregnation of the textile by continuous soaking and then calendering).

A **COSMETOTEXTILE** is a textile item containing a substance or a preparation intended to be released durably on the various surfaces of the human body, in particular on the epidermis, and embodying one (or more) particular property(ies) such as cleaning, fragrance, modification of appearance, protection, maintenance in good condition or correction of body odours.

## PARTNERS



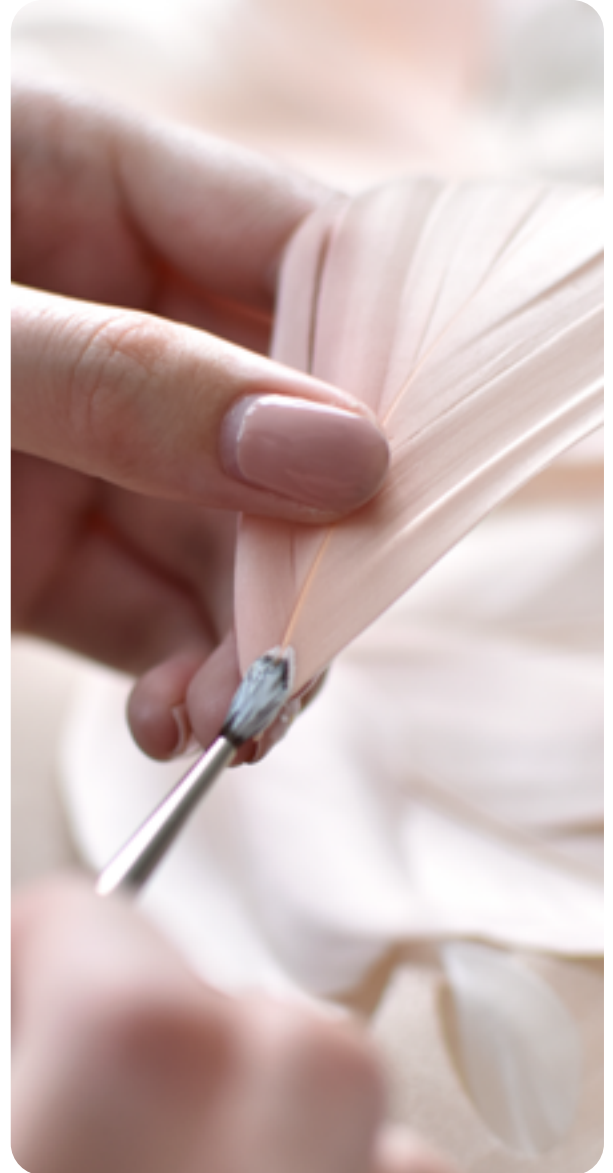


# Éole

Wind energy is showcased in this capsule, as well as the search for new composite materials for the construction of blades.

Wind energy is recognised by the scientific and climate community as one of the most effective energy technologies for reducing greenhouse gas emissions. In response to climate and energy challenges, research into the materials used in this energy is constantly evolving (recycling, zero waste, etc.).

For example, Unéole, a company in the Hauts-de-France region, integrated flax into the construction of a city wind turbine in 2017, and the French manufacturer **Vergnet**, produces wind turbines specially designed for cyclonic conditions. Vergnet is also developing research on biosourced composite materials based on flax fibres. For *Textidream*, a model of a two-bladed wind turbine illustrates this research into wind energy and makes the finely cut feathers flutter on the organza of the wind dress specially designed by **Janaína Milheiro** (FR).



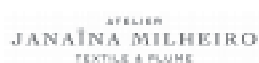
## UN SUSTAINABLE DEVELOPMENT GOALS:

**7** Ensure access to affordable, reliable, sustainable and modern energy for all

### PARTNERS



Ormes (45)



Paris (75)

### SAMPLES



Killem (59)



Tourcoing (59)



Saillly-sur-la-Lys (59)





# Aquatic

In this capsule, artist **Jérémy Gobé** (FR) invites visitors to enjoy a truly artistic experience coupled with a scientific study on the preservation of corals.

His installation *Coral Artefact Regeneration 1*, created for lille3000, was developed in collaboration with the **Centre National de la Mer Nausicaá** (FR) and the **Mobilier National** (FR). Over a 6 month-period (from 15 December 2020 to 15 June 2021), the sculpture designed by the artist and 3D printed using biosourced filaments was covered with lace made with a stitch called point d'esprit.

In fact, this pattern can be seen on a coral skeleton at **Lille Natural History Museum** (FR). It was used to develop coral cuttings (fragments), which took hold on this textile component and were able to grow normally, proof of the textile's non-toxicity for the marine environment.

In the course of this experiment, the artist also developed a completely ecological system for taking cuttings. On the strength of this first promising test, Jérémy Gobé has decided to pursue the study of this process with the Centre National de la Mer, offering hope for the reconstruction, protection and regeneration of coral reefs.

## UN SUSTAINABLE DEVELOPMENT GOALS:

**14** Conserve and sustainably use the oceans, seas and marine resources for sustainable development



The artist created a coral-inspired sculpture made from **PLA OYSTER** filament symbolising the regeneration of living coral. The process was filmed over a six-month period in the aquariums of Nausicaá, Centre National de la Mer in Boulogne-sur-Mer. This film will be shown in the capsule.

The **PLA OYSTER** filament is a biopolymer incorporating oyster shell powder. PLA is a biodegradable plastic obtained from natural resources (starches extracted from corn, beet, wheat, etc.)

## PARTNERS



Boulogne-sur-Mer (62)



Paris (75)



Paris (75)



Lille (59)



Manneville-la-Goupil (76)





# Lux

An electric laboratory on the theme of light and textiles comes to life in this capsule to a choreography of pulsing lights showcasing the *Lux* dress created by the famous fashion house **On Aura Tout Vu** (FR).

A dress with moonlight reflections accompanied by a funny little monster illustrates, in collaboration with French companies, French haute-couture know-how and new technologies:

Six metres of lace were specially made by the company **Solstiss** (FR) and were then set with 327 LEDs by **E&T Symbiose** (FR). **Declercq Passementiers** (FR) decorated the corset with optical fibres and is presenting its first Luce trimmings made of optical fibres here.

**Brochier Technologies** has lined the capsule with a woven fibre optic curtain, a unique technological feat. A subsidiary of the Lyon silk company of the same name, Brochier Technologies joined forces with the weaving company Denis & Fils to create *Lightex Industries Innovation*, which specialises in weaving optical fibres to create illuminating and connected fabrics.

## UN SUSTAINABLE DEVELOPMENT GOALS:

**12** Ensure sustainable consumption and production patterns



**ON AURA TOUT VU** has followed a unique path in the world of fashion: embroidery, painting, sculpture, welding and sewing all participate in the creation of new textures formed through mixtures, juxtapositions, superimpositions and hybridisations. The method, which is applied equally to jewellery, accessories, clothing, technological objects, textile sculptures, boxes, bottles or furniture, is akin to a jubilant research project, a permanent challenge to the dogmas of good taste. Style is maximised, teeming with colours, materials, techniques, treatments, ideas and anything that can be manipulated.

## PARTNERS



Paris (75)

**BROCHIER** TECHNOLOGIES

Villeurbanne (69)

**solstiss**

Caudry (59)



Tourcoing (59)



Paris (75)



# Cosmos

In an interstellar setting, several high-performance textiles used for spacewalks are on display.

On loan from **La Cité de l'Espace** (FR), the *SOKOL-KV2* spacesuit, a replica of the one worn by Thomas Pesquet on his way to the International Space Station for the Proxima mission in 2017, which protects the astronaut during the active phases of the Soyuz flight (take-off, rendezvous, return to Earth). It ensures survival in the event of depressurisation. Its outer layer is made of polyethylene terephthalate (PET) fibre. The second layer, made of nylon 6 (or capron), renders the suit watertight. Made in one piece, it incorporates a pressure gauge to check the pressure inside the suit, as well as several tubes to ensure the circulation of water internally. A communication cable is used to connect headphones and microphones.



**THE SOKOL SPACESUIT** is a safety suit to protect the astronaut in case of the accidental depressurisation of the spacecraft. It is worn during the active and dangerous phases of the outward and return journey. It remains aboard the capsule until the astronaut's return.

This cutaway model of the European *ARIANE 5* launcher, on loan from the **CNES** (FR), is a reminder of the missions undertaken by the rocket, which breaks free from the Earth's gravity in a few seconds and transports satellites or interplanetary probes. In particular, it incorporates multi-layer thermal insulation blankets, known as MLI (Multi-Layer Insulation), including double-sided aluminised Mylar, separated by polyester netting, with the evocative name of "bridal veil" or with fibreglass fabric, whose role is to avoid thermal contact by conduction.

## UN SUSTAINABLE DEVELOPMENT GOALS:

**9 Build resilient infrastructure, promote inclusive and sustainable industrialisation and foster innovation**

### LENDERS



Toulouse (31)



Lille (59)

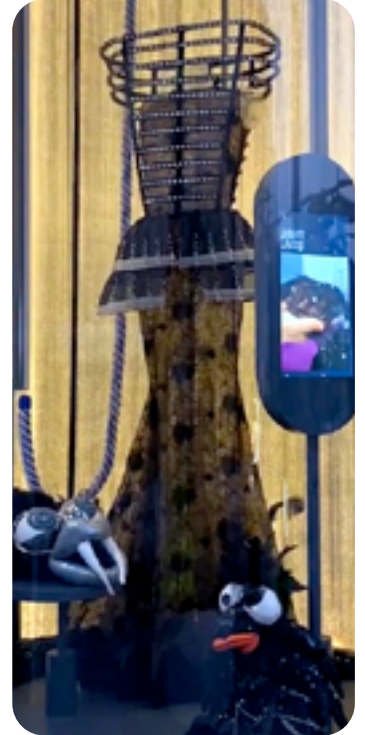


Toulouse (31)





# In situ views









# Team & contacts

---

## lille3000 TEAM

### BOARD OF DIRECTORS

**President**, Ivan Renar

**Treasurer**, Thierry Landron

**Secretary**, Jean-François Dutilleul

**Administrator**, Dominique Lagache

**Coordinator**, Thierry Lesueur

**Coordination Officer & Partnerships**,

Charles Bonduaeux

**Accountant**, Chantal Dupond

**General curator Futurotextiles et artistic advisor for lille3000**, Caroline David

**Textidream assistant**, Ophélie Pierron

**Artistic advisor**, Didier Fusillier

**Coordination Visual Arts**, Caroline Carton

**Head technical manager**, Frédéric Platteau

**With** Camille Ortegat

**Technical manager of exhibitions**, Stéphane André

**Production officers**,

Cyril Menossi et Élisabeth Gautier

**Head of Communication**

**& Press relations**, Olivier Célarié

**Communication and Protocol officer, Assistant to**

**Didier Fusiller**, Vanessa Duret

**Communication Assistant**, Quentin Faye

**Communication / Press relations Assistant**, Aristide Pluvinaige

**Textidream Scenographer**, Georgi Stanishev

## PRESS CONTACTS

Association lille3000

Centre Commercial Euralille - CS 80053

F-59031 Lille Cedex

**Caroline David**

**General curator Futurotextiles for lille3000**

caroline.david@lille3000.com

**Olivier Célarié**

**Head of Communication & Press relations**

olivier.celarie@lille3000.com / presse@lille3000.com

T +33(0)3 28 52 20 09

# Textidream partners

## INSTITUTIONAL PARTNERS lille3000



## OFFICIAL PARTNERS lille3000



## OFFICIAL SUPPLIER lille3000



## WITH THE SUPPORT OF



## TEXTIDREAM PARTNERS



## Notes

This image shows a full page of white paper with horizontal blue ruling lines. The lines are evenly spaced and run across the width of the page. There is a small dark speck near the top center and another near the bottom right corner. The page is otherwise blank.







---

**lille3000 Centre Commercial Euralille CS 80053 F-59031 Lille Cedex**  
**TEL +33 (0)3 28 52 30 00 FAX +33 (0)3 28 52 20 70**  
**[www.lille3000.com](http://www.lille3000.com) - [www.futurotextiles.com](http://www.futurotextiles.com)**

---